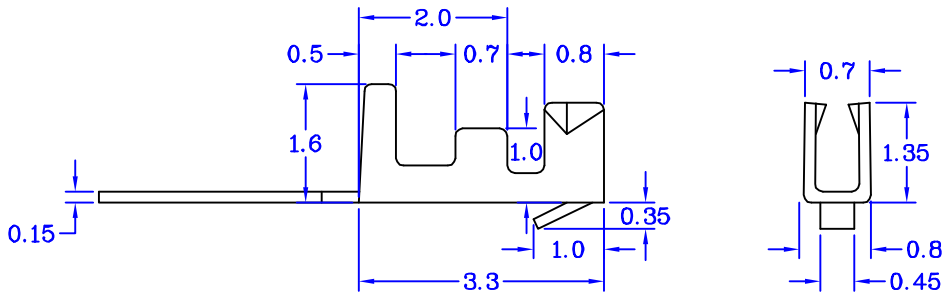
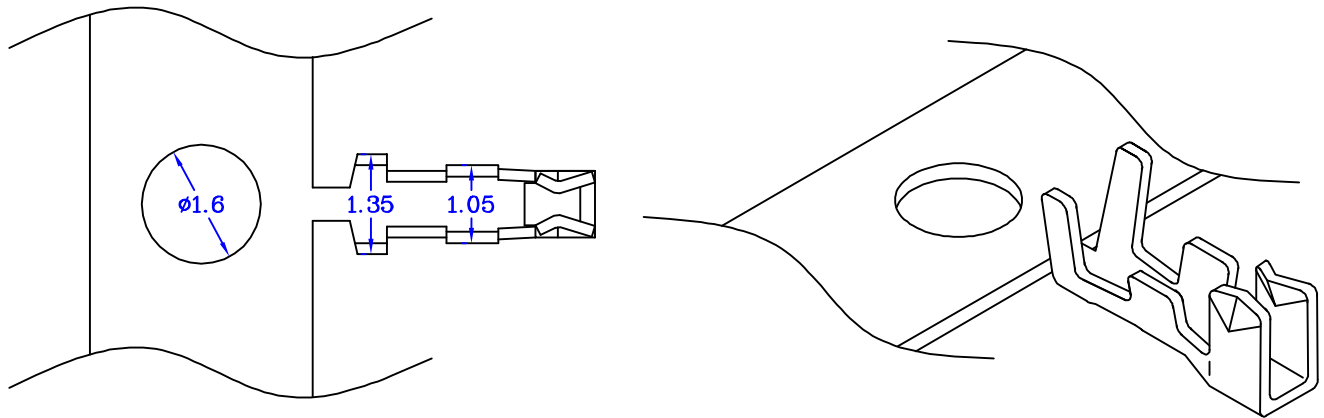


ORDERING INFORMATION



Series	1	2	3
[]	[]	[]	[]

Series PXT : Terminal (Female)

1. Plating Option G : Gold Plated
 T : Tin Plated

2. Corresponding No. K01 (Pitch 1.0mm No. K01) ; X01 (Pitch 1.25mm No. X01)
 X02 (Pitch 1.25mm No. X02) ; 001 (Pitch 1.5mm No. 001)
 A01 (Pitch 2.0mm No. A01) ; A02 (Pitch 2.0mm No. A02)
 A03 (Pitch 2.0mm No. A03) ; A04 (Pitch 2.0mm No. A04)
 A05 (Pitch 2.0mm No. A05) ; B01 (Pitch 2.5mm No. B01)
 B02 (Pitch 2.5mm No. B02) ; B03 (Pitch 2.5mm No. B03)
 B04 (Pitch 2.5mm No. B04) ; B05 (Pitch 2.5mm No. B05)
 B06 (Pitch 2.5mm No. B06) ; B07 (Pitch 2.5mm No. B07)
 B08 (Pitch 2.5mm No. B08) ; B09 (Pitch 2.5mm No. B09)
 C01 (Pitch 2.54mm No. C01) ; C02 (Pitch 2.54mm No. C02)
 C03 (Pitch 2.54mm No. C03) ; C04 (Pitch 2.54mm No. C04)
 C05 (Pitch 2.54mm No. C05) ; D01 (Pitch 3.96mm No. D01)
 D02 (Pitch 3.96mm No. D02) ; D03 (Pitch 3.96mm No. D03)
 D04 (Pitch 3.96mm No. D04) ; E01 (Pitch 5.0mm No. E01)
 J01 (Pitch 5.08mm No. J01) ; F01 (Pitch 8.0mm No. F01)
 G01 (Pitch 3.5mm No. G01) ; H01 (Pitch 4.2mm No. H01)

3. Material Blank : Brass
 P : Phosphor Bronze

EXAMPLE : PXT T B01
 Terminal (Female) For Pitch 2.5mm Tin Plated (Serial number : B01)

Mbrlinkom Technology Ltd.