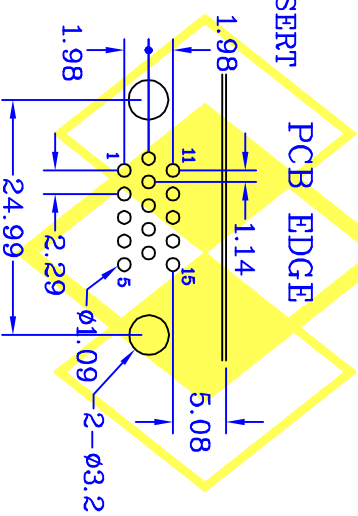
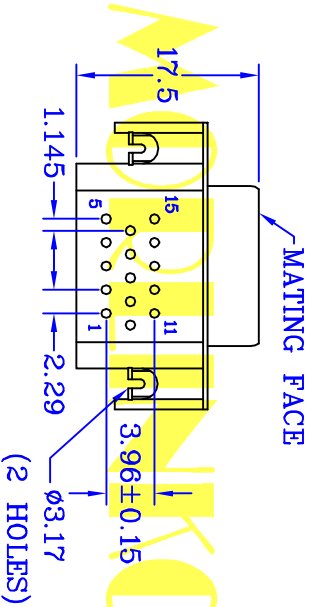


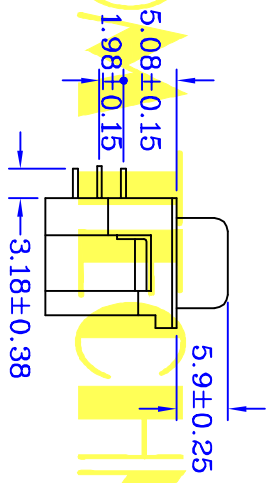
#4-40 UNC
THREADED INSERT



PCB
EDGE



MATING
FACE



SPECIFICATIONS

ELECTRICAL

- Contact Current Rating : 2 Ampere
- Contact Resistance : 15 mΩ Max
- Insulator Resistance : 1,000 MΩ Min
- Dielectric Withstanding Voltage : 1000 V AC RMS 60 Seconds

MATERIAL

- Insulator : PBT UL94V-0.
- Contact : Brass
- Contact Plated : Gold Plated
- Shell : Steel
- Shell Plated : Nickel Plated
- Operation Temperature : - 40°C to + 105°C

UNIT : mm

TECHNOLOGY LTD.

CENTRONIC PRECISION ELECTRONIC COMPANY
 三川精密電子有限公司
 TEL: 886-2-2686-8788 FAX: 886-2-2686-0018
 E-MAIL: Centron@pts6.seed.net.tw

MORLINKOM TECHNOLOGY LTD
 麗林科技有限公司
 E-MAIL: Cen8888@gmail.com

繪圖 DRAWN BY FUJFU	日期 DATE 2011/03/29
核對 CHECKED BY WENDY	比例 SCALE 1:1

HDREPPXSB2#1

圖號
DRAWING NO.
541-15-17