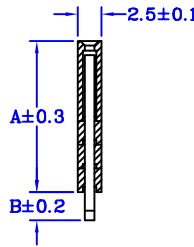
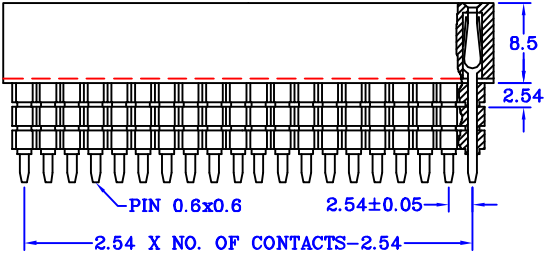
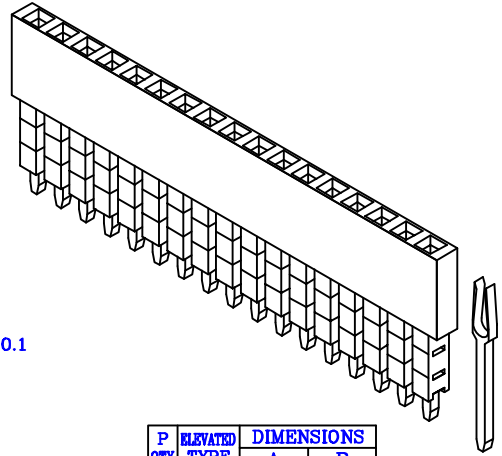
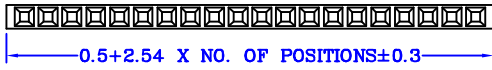
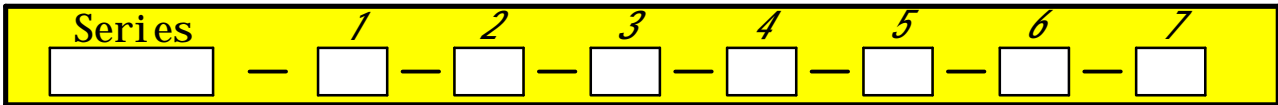


# ORDERING INFORMATION



P	ELEVATED QTY	DIMENSIONS	
		A	B
1P	1P(1)	11.04	2.3
	1P(2)	11.04	12.2
	1P(3)	11.04	7.38
	1P(4)	11.04	2.9
2P	2P(1)	13.58	4.84
	2P(2)	13.58	9.65
3P	3P(1)	16.12	2.3
	3P(2)	16.12	7.1
	3P(3)	16.12	3.5
4P	4P(1)	18.66	4.6



- Series EF : Pitch 2.54mm Female Header Elevated Type
- 1. Terminal Type S : Straight Termination  
R : Right Angle Termination
- 2. Row Type 1 : Single Row  
2 : Dual Rows
- 3. Number of Contacts Single Row : 02 ~ 40 Contacts  
Dual Rows : 04 ~ 80 Contacts In Total
- 4. Plating Option G : Gold Plated ( Standard )  
T : Tin Plated  
S : Selective Plated
- 5. Products Logo A : Custom-Made  
B : Without Logo ( Standard )
- 6. Insulator Color 1 : Black ( Standard )
- 7. Elevated Pin Length Type ( P= Plastic Block 2.54mm ) **【TABLE】** 1P(1) 1P(2) 1P(3) 1P(4)  
2P(1) 2P(2)  
3P(1) 3P(2) 3P(3)  
4P(1)

**EXAMPLE :** EF S 1 17 G B 1 3P(3)  
 Pitch 2.54mm Female Header Elevated Type  
 Straight Termination Single Row 17 Pin Gold Plated  
 Without Logo Insulator Color Black  
 3 Plastic Block( A = 7.62mm + 8.5mm = 16.12mm )  
 Pin Length (B) 3.5mm

Mbrlinkom Technology Ltd.