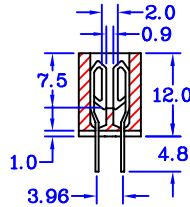
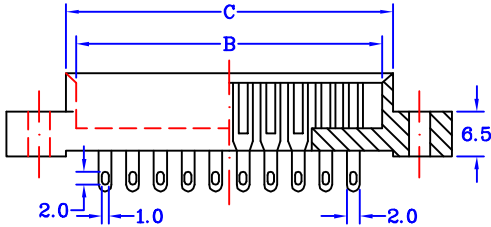
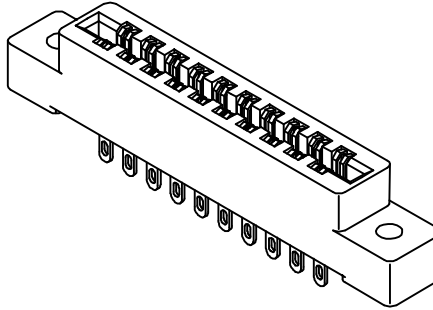
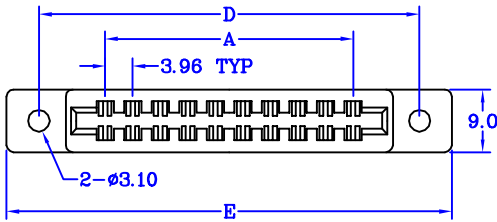
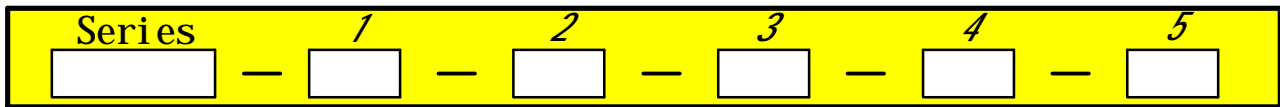


ORDERING INFORMATION



LECSXXSB2	DIMENSIONS				
CONTACTS	A±0.2	B±0.3	C±0.3	D±0.2	E±0.3
10	15.84	24.06	27.40	34.94	41.24
12	19.80	28.02	31.36	38.90	45.20
16	27.72	35.94	39.28	46.82	53.12
20	35.64	43.86	47.20	54.74	61.04
24	43.56	51.78	55.12	62.66	68.96
26	47.52	55.74	59.08	66.62	72.92
28	51.48	59.70	63.04	70.58	76.88
30	55.44	63.66	67.00	74.54	80.84
32	59.40	67.62	70.96	78.50	84.80
36	67.32	75.54	78.88	86.42	92.72
40	75.24	83.46	86.80	94.34	100.64
44	83.16	91.38	94.72	102.26	108.56
46	87.12	95.34	98.68	106.22	112.52
50	95.04	103.26	106.60	114.14	120.44
56	106.92	115.14	118.48	126.02	132.32
60	114.84	123.06	126.40	133.94	140.24
62	118.80	127.02	130.36	137.90	144.20
64	122.76	130.98	134.32	141.86	148.16
70	134.64	142.86	146.20	153.74	160.04
72	138.60	146.82	150.16	157.70	164.00
86	166.32	174.54	177.88	185.49	191.48



Series LECS : Pitch 3.96mm Edge Connector With Mounting Ear

1. Terminal Tail P : Dip Type
S : Solder Wire Type

2. Number of Contacts 10 12 16 20 22 24 26 28 32 36 40 44 48 50
56 60 62 64 70 72 84 86

3. Plating Option S : Selective Plated(Standard)
G : Gold Plated
T : Tin Plated

4. Products Logo A : Custom-Made
B : Without Logo (Standard)

5. Insulator Color 1 : Black
2 : Blue

EXAMPLE : LEC S S 60 S B 2

Pitch 3.96mm Edge Connector With Mounting Ear
Solder Wire Type 60 Pin Selective Plated
Without Logo Insulator Color Blue

Mbrlinkom Technology Ltd.